

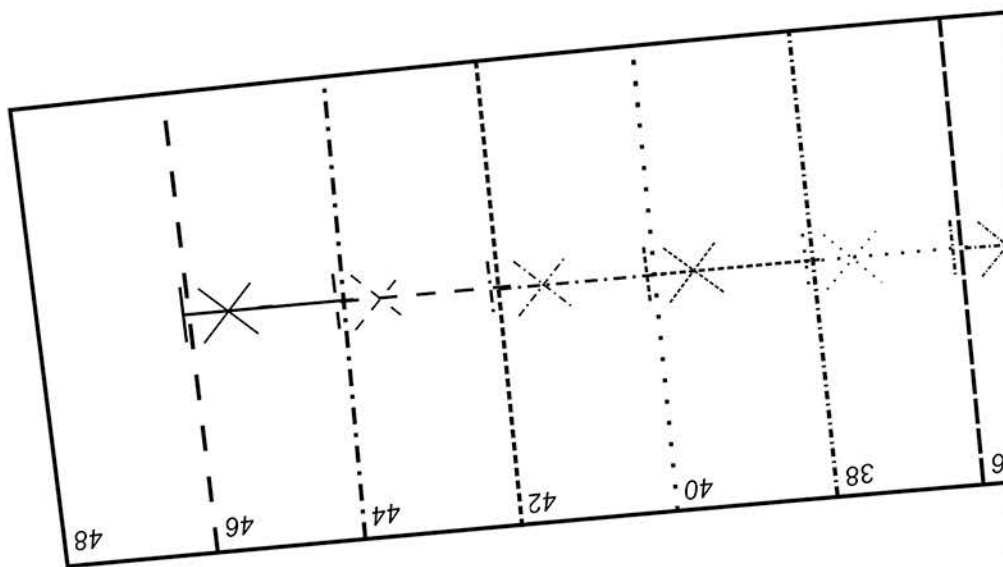
Pauline Alice
SEWING PATTERNS

1504
ROSARÍ SKIRT

TEST SQUARE

10 cm x 10 cm
3 15/16" x 3 15/16"

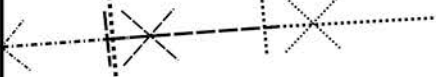
3A



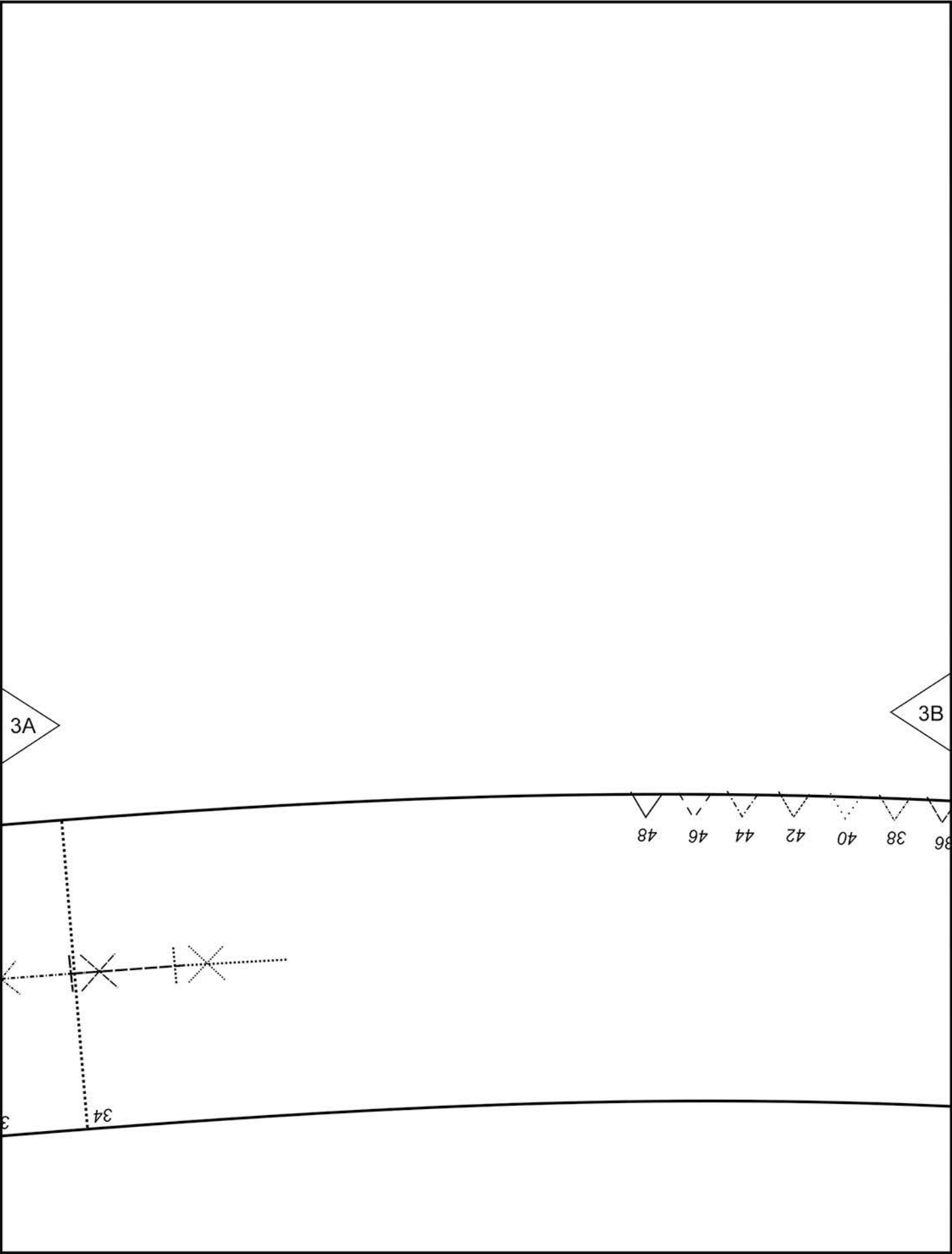
3A

3B

36
38
40
42
44
46
48



34



3B

34

3
WAISTBAND
cut 2 on fold - main fabric
cut 2 on fold - interfacing
1504
ROSARI SKIRT
pauline alice
SEWING PATTERNS

place on fold

